

Onshore Transmission Works Public Consultation

Co-chomhairle Phoblach mu Obraichean Tar-chuir air Tìr

November 24th – December 24th 2025



PURPOSE AND SCOPE OF THIS CONSULTATION

ADHBHAR AGUS FARSAINGEACHD NA CO-CHOMHAIRLE SEO

Thank you for taking the time to visit our consultation.

The purpose of this consultation is to share details of, and seek feedback on, the final proposals for the Onshore Transmission Works (OTW) of the proposed Spiorad na Mara offshore windfarm, including the updated grid substation location which was recently consulted on between 30th September and 14th October 2025.

This consultation is being held in accordance with the pre-application consultation process required under the Town and Country Planning (Scotland) Act 1997 (TCPA) and in line with the updated Pre-Application Public Consultation Notice submitted to the local authority in May 2025 (Ref 24/00327/PAN).

Feedback received during the recent Updated Grid Substation Consultation has been reviewed and considered as part of the progression of our OTW proposals. As part of this consultation, we have included a summary of the feedback received at the Updated Grid Substation Consultation and our responses to this feedback. This consultation also includes:

- Updated information, including photomontages and maps, relating to the proposed onshore grid substation location (near Arnish) and its associated infrastructure; and
- Updated information on the proposed cycleway/multi-use path, details of which were first shared during our second phase of public consultation (PC2), which took place in June/July 2025.

We encourage people to provide feedback on the updated onshore proposals during this consultation process.

This consultation does not focus on any of the offshore elements of the project. The next opportunity for the public to comment on the offshore elements of the project will be following submission of our offshore consent application to the Marine Directorate, details of which will be shared at that time.

OVERVIEW OF ONSHORE TRANSMISSION WORKS (OTW)

SEALLADH FARSAING AIR OBAIR TAR-CHUIR AIR TÌR

The OTW are essential components of the proposed Spiorad na Mara offshore windfarm project. They include the landfall location, potential landfall substation, onshore cable route, and grid substation, which together enable the transmission of electricity generated offshore to the grid.

A design envelope approach is being taken for the onshore consent application. This means that the Environmental Impact Assessment (EIA), which is undertaken as part of the application process, is based on maximum parameters to ensure that the maximum potential impacts are considered. The project parameters will be refined further during the detailed design phase of work, which will take place after consents have been received.

LANDFALL




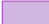

TIGHINN AIR TÌR

Landfall is the point where offshore cables come ashore and connect to the OTW infrastructure. For the Spiorad na Mara project, landfall will be at a point northeast of Barvas on the west coast of the Isle of Lewis (see Fig 2 on the right-hand page).

There are no updates to the proposed landfall location since PC2 and all relevant information from that consultation, which is still [available on our website](#), remains applicable.

FIG 1

ONSHORE TRANSMISSION WORKS

-  Onshore Red Line Boundary
-  Onshore Cable Route Corridor
-  Landfall Area
-  Onshore Grid Substation Area
-  SSEN Lewis Hub

1:50,000 Scale
Ref: 004-001-080



Date: 04/11/2025



FIG 2

LANDFALL LOCATION

-  Onshore Red Line Boundary
-  Landfall Area

1:15,000 Scale @ A3
Ref: 004-001-069



Date: 2025-05-16



ONSHORE SUBSTATIONS

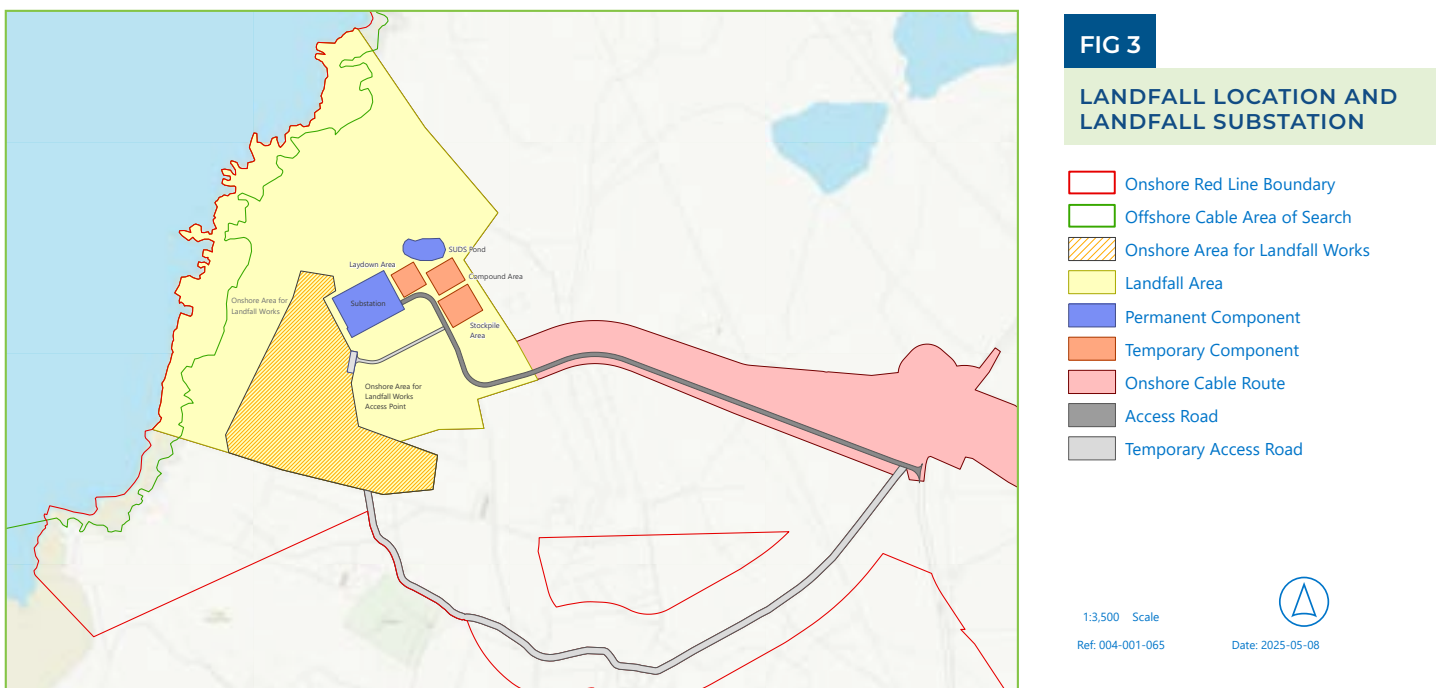
FO-STÈISEANAN AIR TÌR

LANDFALL SUBSTATION

As detailed at previous project consultations, the landfall substation is one of two design options being considered for the project – with the alternative being an offshore substation. The landfall substation will allow the voltage of electricity in the onshore cables to be increased to meet onward transmission requirements. The landfall substation is proposed to be located near to the landfall location northeast of Barvas (as shown in Fig 3 below).

The proposed design parameters of the landfall substation remain the same as those presented at PC2. The landfall site compound will consist of two main buildings with a maximum height of 15m to the apex of the tallest roof, plus several other smaller buildings which will house electrical equipment. Other infrastructure that will be required includes safety features such as lightning masts, which are proposed to be 20m in height, and access paths/roads. **Further details on the design and construction remain available on our website.**

Although no design changes have been made to the proposed landfall substation, further assessment work has been completed since PC2. This will be reported in the EIA Report (EIAR), which will be submitted as part of the onshore application.



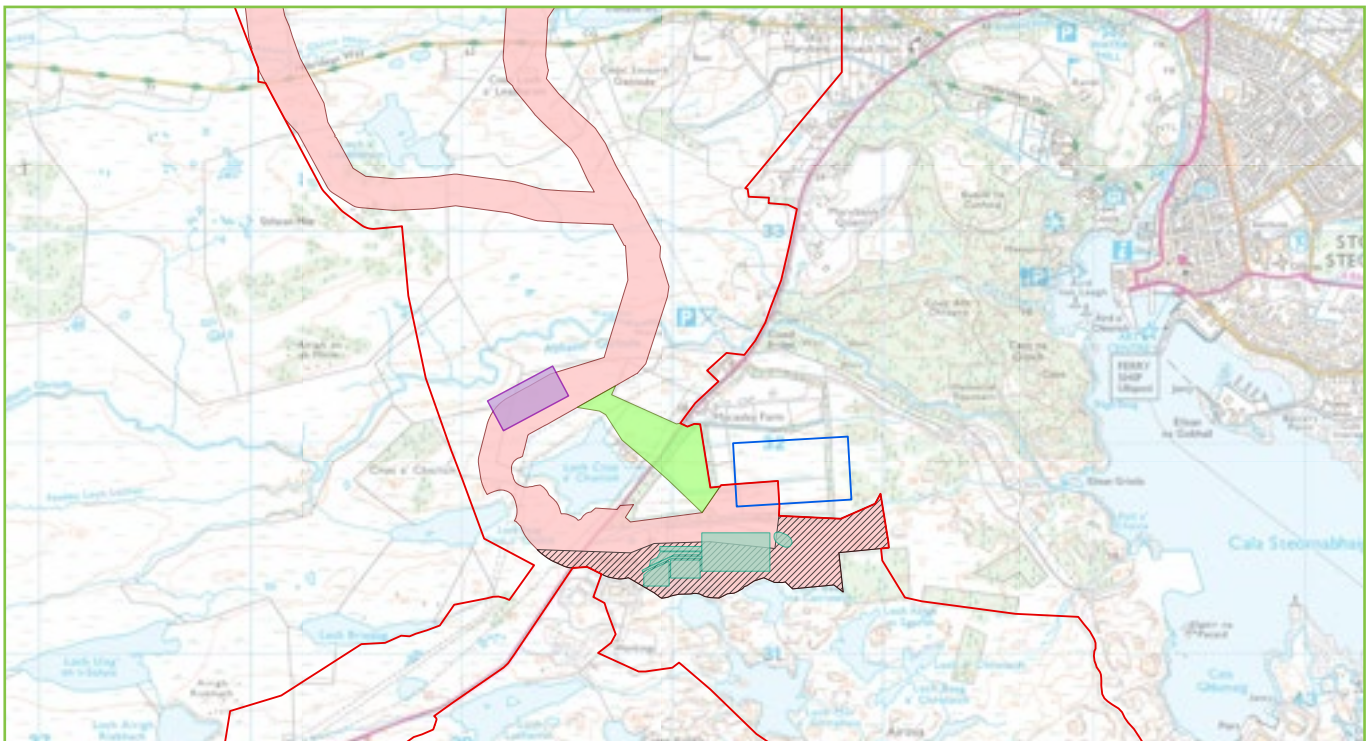
GRID SUBSTATION

The grid substation will hold the electrical equipment required to connect the Spiorad na Mara offshore windfarm to the grid, via the converter station proposed to be built by SSEN near Arnish (the proposed Lewis Hub). Electricity generated from the offshore array will be carried through the onshore energy transmission infrastructure – the landfall substation (if required) and onshore cables – into the grid substation. The grid substation will increase the voltage of the electricity to a level which will meet onward transmission requirements to be accepted by the grid.

LOCATION CONFIRMED

At the recent Updated Grid Substation Consultation held in September/October 2025, it was outlined that the location of the proposed grid substation was being revised, and the preferred alternative location was a site northwest of Loch Cnoc a' Choilich, in Creed Southwest. Since then, all feedback received has been reviewed and considered, and further technical and environmental assessments have taken place. The location (as presented in Fig 4 below) has now been confirmed as the preferred location.

FIG 4 PREFERRED GRID SUBSTATION LOCATION



- PAN Boundary
- Onshore Cable Route Corridor
- Revised Preferred Substation Location (temporary areas to be confirmed)
- Substation Location as consulted previously (includes temporary areas)
- Proposed SSEN Lewis Hub
- Potential Additional Cable Corridor east of Loch Cnoc a' Choilich
- Potential Cable Corridor Area to be removed

1:10,000 Scale

Ref: 004-001-079

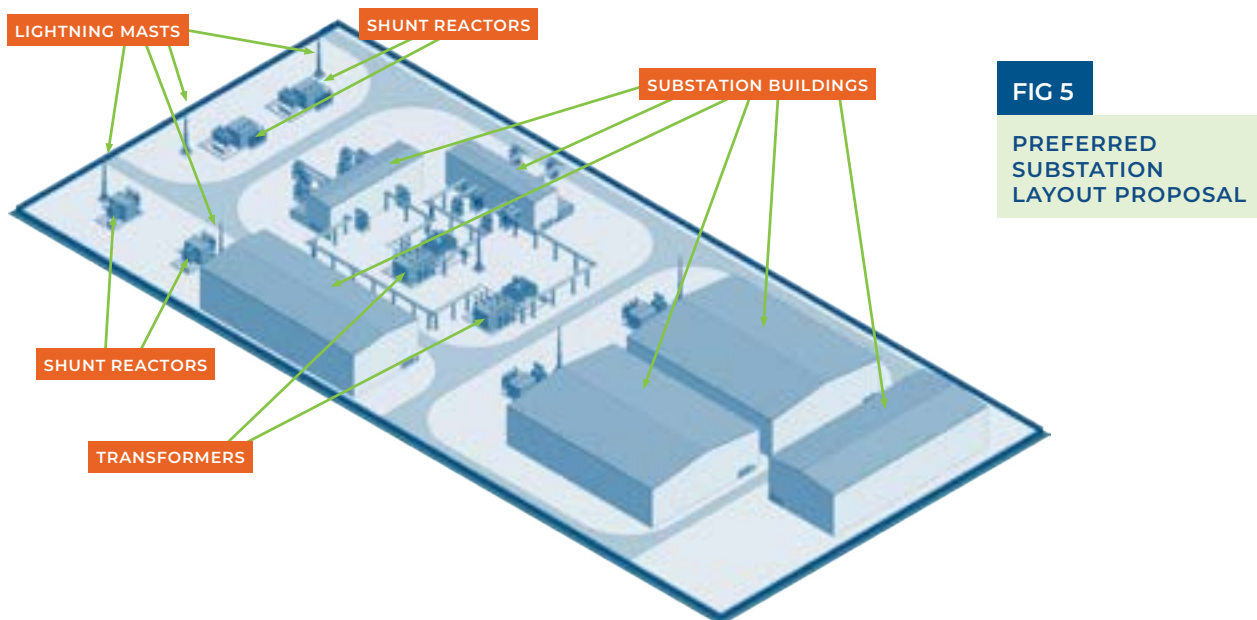


Date: 08/09/2025

DESIGN PARAMETERS

The proposed design parameters for the grid substation remain the same as those presented at the Updated Grid Substation Consultation. The site compound will consist of up to six main buildings with a maximum height of 20m to the apex of the tallest roof, plus several other smaller buildings which will house electrical equipment (as shown in Fig 5). Other infrastructure that will be required includes safety features such as lightning masts, which are proposed to be 20m in height, and access paths/roads.

The overall dimensions and layout of the site compound will remain as presented in September/October 2025 – a maximum of 380m x 160m which results in a narrower and longer layout than previously anticipated at the originally proposed site east of Creed Industrial Park. This is a result of site-specific constraints at this location.



REASONS FOR SELECTION

The preferred site avoids areas of deep peat, maintains a buffer to the River Creed and avoids existing and proposed overhead lines. The preferred location also:

- Avoids other existing and consented infrastructure and environmental designations;
- Avoids the Lewis Peat Works/Lewis Chemical Works, known for its importance to local history;
- Avoids residential areas;
- Avoids, to the maximum extent possible, land which is under common grazing or agricultural use;
- Remains located near to the industrial park where large buildings are already present in the landscape; and
- Is located beside the consented area for Stornoway Wind Farm.

As part of this consultation, photomontages have been provided to show what the grid substation may look like from a number of different local vantage points in the area. These can be accessed via the project website: www.spioradnamara.co.uk.

ACCESS AND CABLE CONNECTION

The grid substation will be accessed by a permanent road which is proposed to be built to the northeast of Loch Cnoc a' Choilich. Routing options for the cable required to connect the grid substation to the SSEN Lewis Hub are still being considered, and therefore the two cable route options presented in the Updated Grid Substation Consultation in September/October are being assessed within the EIA and will be carried forward into planning. Further information on the onshore cable route is provided under the 'Onshore Cable Route' section of this consultation.

STAKEHOLDER FEEDBACK AND CONCERNS

The potential for pollution incidents impacting salmon in the Creed River was raised by stakeholders as a key concern during the Updated Grid Substation Consultation and in separate engagements with other local stakeholders. Pollution control will be managed by the project through appropriate construction methodologies, the Construction Management Plan and best practice environmental monitoring and auditing. All requirements and commitments will be outlined in the EIAR, which will be submitted as part of the onshore application. Other concerns raised in feedback from previous consultations were the potential noise and lighting impacts related to the grid substation. The grid substation will require lighting to ensure a safe work environment during construction and operation. The lighting will be carefully planned and measures put in place to reduce the potential visual impact of the lighting. During operations, motion sensors will be used for night-time lighting and directional security lighting will be installed with consideration of the public and wildlife, aiming to keep disturbance to a minimum.

The potential noise impacts from the grid substation are being assessed within the EIA; it is expected that noise limits would be set as conditions to any consent received and the grid substation would be required to operate within these limits.

The importance of the nearby Lochside Arena as a recreational facility for the local community is recognised and proactive conversations have taken place with its custodians to discuss potential concerns. Close contact will be maintained throughout the development and construction processes, to ensure that project activities are managed in a way that minimises disturbance to the Arena and its users.

COLOUR STUDIES

One of the assessments being carried out for both substations is an outline colour study, which will inform the choice of colours for the landfall substation (if this design option is carried forward) and the grid substation. The colour study takes relevant viewpoints located close to each proposed substation site and assesses colour options for the buildings that are broadly similar to those found in the surrounding landscape. The final outline colour study will be available as an appendix of the final EIAR.

ONSHORE CABLE ROUTE

SLIGHE CÀBALL AIR TÌR

The onshore cable route will connect the landfall to the grid substation and then to the SSEN Lewis Hub. The onshore cable route remains the same as presented at PC2 from the landfall site in the west along the Barvas Moor Road (A857) to the grid substation location. As detailed at the Updated Grid Substation Consultation, there are now two options being considered for routing the onshore cable from the grid substation to the SSEN Lewis Hub. These are:

- The original cable route presented as part of our previous consultations (PC1 and PC2), running west of Loch Cnoc a'Choilich, and
- An alternative, shorter route east of the Lochside Arena (presented during the Updated Grid Substation Consultation).

Both options are shown in Fig 6.

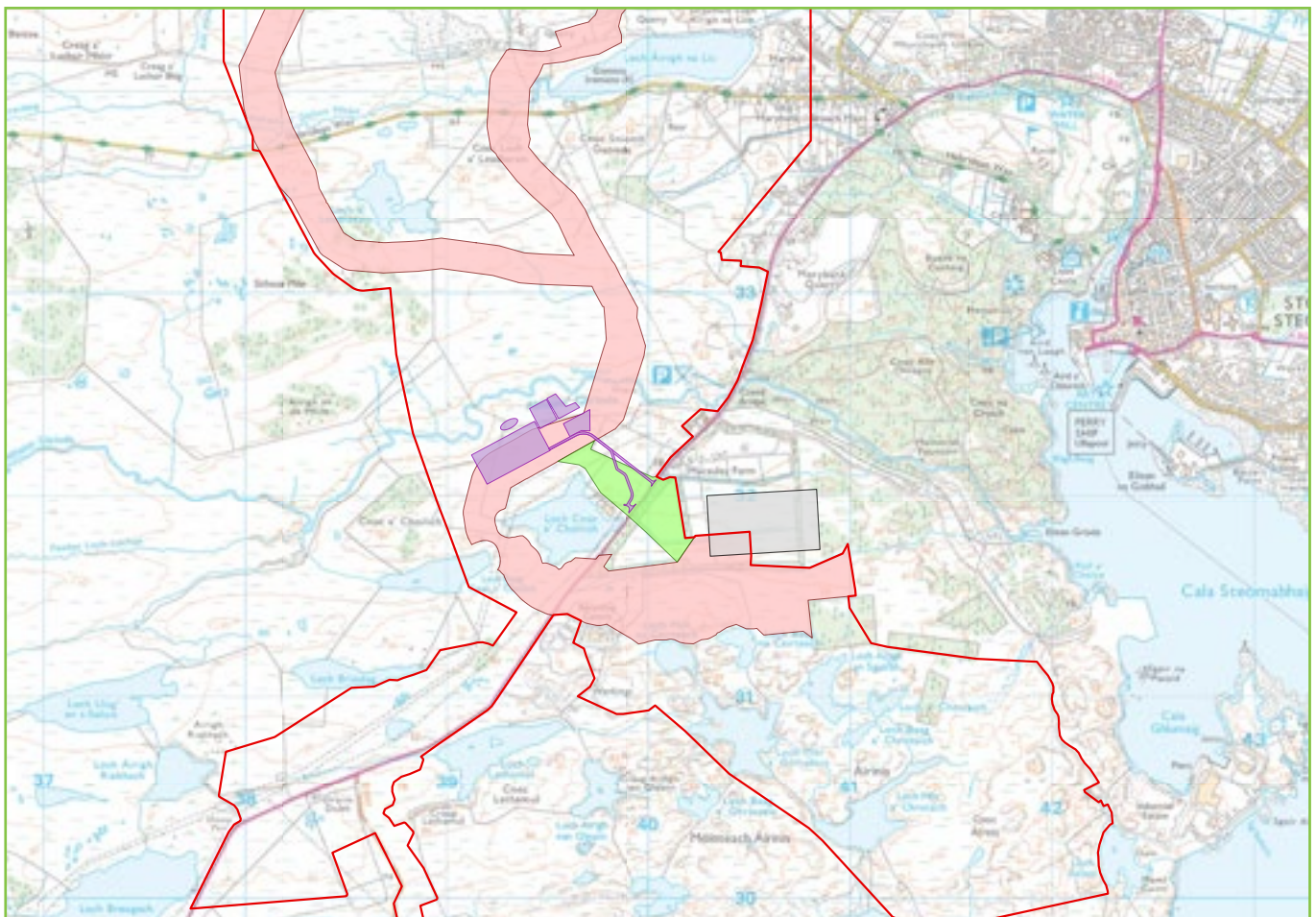



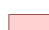



FIG 6

**CABLE ROUTE OPTIONS
BETWEEN GRID SUBSTATION
AND LEWIS HUB**

- | | |
|--|---|
|  Onshore Red Line Boundary |  SSEN Lewis Hub |
|  Onshore Grid Substation Infrastructure |  Original Onshore Cable Route Corridor |
|  Revised Cable Corridor | |

1:10,000 Scale

Ref: 004-001-082



Date: 04/11/2025

CYCLEWAY/MULTI-USE PATH UPDATES

ÙRACHADH AIR SLIGHEAN-ROTHAIR/SLIGHEAN IOMA-CHLEACHDAIDH

As previously announced at PC2, the project intends to repurpose the haul road required for the construction of the onshore cables into a cycleway/multi-use path. Since PC2, further discussions and assessments have been undertaken to progress the potential design and route of the cycleway/multi-use path.

It is proposed that it will consist of three distinct sections of off- and on-road infrastructure, as follows:

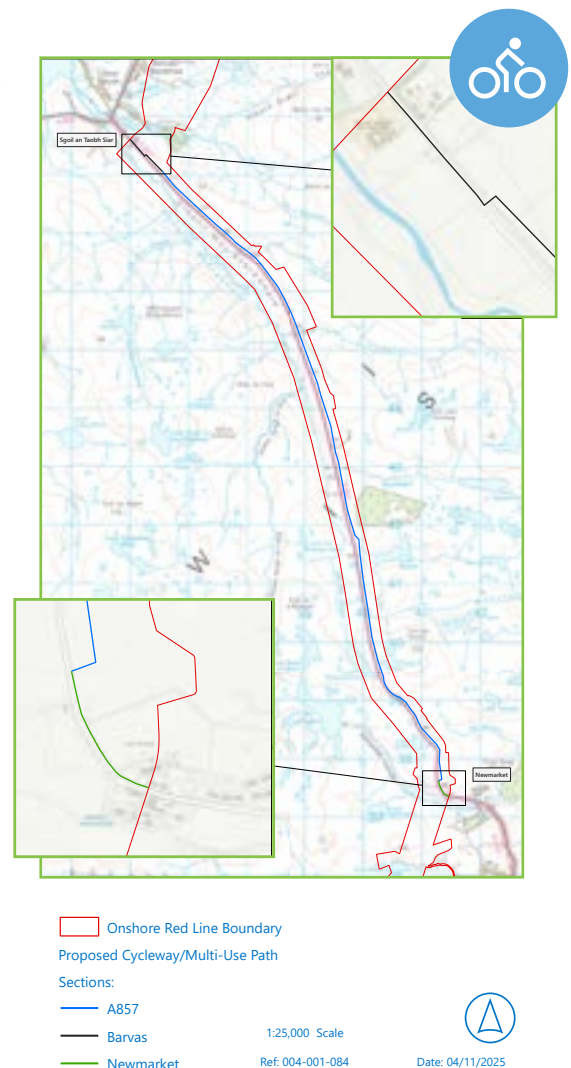
- 1. Barvas section:** a new segregated roadside active travel route section (380m), which would connect the haul road to Sgoil an Taobh Siar, the local primary school in Barvas. Cycle parking and signage could be included at this point, subject to engagement with local stakeholders and Comhairle nan Eilean Siar.
- 2. A857 section:** off-road re-purposed haul road (12.4km), connecting Barvas to Newmarket on the east side of the island, running on the east side of the road. Signage, information boards, rest stops and other features could be included along this route, to enhance its attractiveness to local users and tourists; and
- 3. Newmarket section:** a new segregated roadside active travel route and on-road sections (750m) linking Newmarket to Barvas via the haul road section. Due to the narrow road width in places, it may be necessary to have a short pedestrian-only pathway within this section. Signage to and from Stornoway could be included within this section, alongside cycle parking.

These proposals have been developed using the principles set out in [Transport Scotland's Cycling by Design 2021](#), and the routes were developed to play a part in the wider network for active travel in the area.

The route for the proposed cycleway/multi-use path will continue to be refined through further assessment work and engagement with relevant stakeholders and authorities. The project will also continue to explore options for extending the route further, in consultation with relevant stakeholders and with consideration for other planned and proposed developments in the area.

FIG 7

PROPOSED CYCLEWAY/MULTI-USE PATH



PEAT MANAGEMENT FOR CABLE ROUTE & GRID SUBSTATION

RIAGHLADH MÒNA AIRSON SLICHE CÀBLA AGUS FO-STÈISEAN A' GHRÌD

We recognise the environmental and cultural importance of peat and carbon-rich soils, particularly for Isle of Lewis communities. Peat and habitat management proposals for all parts of the OTW will be detailed in the EIA, which will form part of the onshore planning application. This will include an outline Peat Management Plan which will present an outline strategy for handling peat during development. A full Peat Management Plan will be developed once final details have been confirmed post-consent.

A number of areas have already been identified as potentially suitable for peat management and restoration works and the project continues to discuss and develop opportunities for peatland restoration, biodiversity net gain and habitat management with Scottish Environment Protection Agency (SEPA), NatureScot, Peatland Action and relevant local stakeholders.

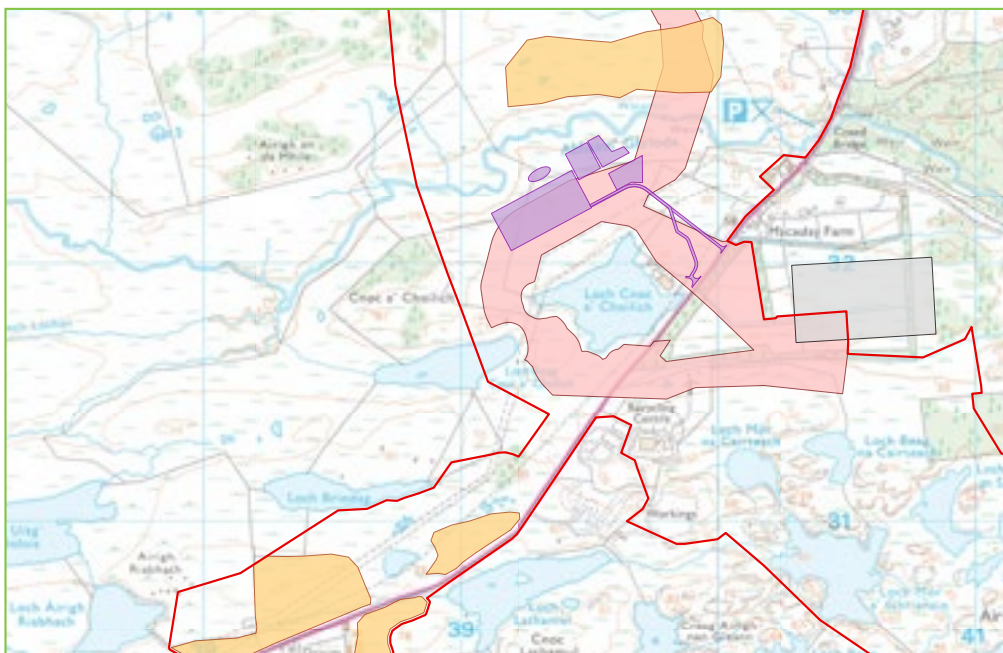


FIG 8

POTENTIAL PEAT MANAGEMENT AREAS

- Onshore Red Line Boundary
- Onshore Cable Route Corridor
- Potential Peat Management Areas
- Onshore Grid Substation Infrastructure
- SSEN Lewis Hub

1:6,000 Scale

Ref: 004-001-083



Date: 04/11/2025

The project will also develop an Outline Biodiversity Restoration and Enhancement Plan (OBREP) as part of the EIA which will provide details of biodiversity restoration and enhancement opportunities. Primary measures in the context of peatland improvement may include:

- Reprofilling *Racomitrium* hummocks (small mounds in peatlands) and historical peat cuttings/hags;
- Damming/gulley blocking; and
- Re-establishing vegetation to create wetter, more stable peatland environments.

The enhancement of peatland habitats will provide benefits for breeding birds such as waders, divers and raptors.

PROJECT TIMELINE AND NEXT STEPS

CLÀR-AMA A' PHRÒISEICT AGUS NAN CEUMANNAN A LEANAS

A planning application for the OTW is expected to be submitted to Comhairle nan Eilean Siar in early 2026. The final OTW proposals presented in this application will incorporate any relevant changes made based on consideration of feedback received during this consultation process. A summary of how feedback from this final consultation has been addressed will be included in the Pre-Application Consultation Report, which will be submitted as part of the planning application.

Following the submission of the planning application, there will be a statutory period for comments from the public which should be made directly to Comhairle nan Eilean Siar. We will share details on this process via our website and other communication channels once they become available.

Subject to all necessary consents being received, construction of Spiorad na Mara could begin in 2028 and the project could be operational by 2031.

YOUR FEEDBACK

NA BEACHDAN AGAIBH



Feedback is important to us as we continue to progress our plans for the project. Please take the time to complete one of the feedback forms available at this event or take it home to complete later and post it back to us using one of the stamped addressed envelopes provided. Alternatively, you can complete an online feedback form through our website, www.spioradnamara.co.uk. Feedback can also be shared by email to spioradnamara@northlandpower.com.

We are committed to inclusive engagement and encourage participation from all community members. If you need any support providing feedback, please get in touch with the team via email at spioradnamara@northlandpower.com or reach out to our Community Liaison Officer using the contact details provided on the next page, and we will be happy to help.

FURTHER INFORMATION AND QUESTIONS

All materials available at this consultation event are also available online at www.spioradnamara.co.uk. Here you will also find further information on all aspects of the project. If you have any follow-up questions or would like to arrange to speak to a member of our technical or environmental team, please contact:

TUILLEADH FIOSRACHAIDH AGUS CHEISTEAN

Tha a h-uile stuth a tha ri fhaighinn aig an tachartas co-chomhairleachaidh seo ri fhaighinn air-loidhne cuideachd aig www.spioradnamara.co.uk. An seo gheibh sibh cuideachd tuilleadh fiosrachaidh mu gach taobh den phròiseact. Ma tha ceistean sam bith eile agaibh no ma tha sibh airson bruidhinn ri ball den sgioba theicnigeach no àrainneachdail againn, cuiribh fios gu:



Kathleen Milne
Community Liaison Officer

✉ kathleen.milne@northlandpower.com

☎ +44 (0) 7442 585935



Correspondence can also be sent to our project office in Stornoway at the address below:

Spiorad na Mara Project Office
Stornoway Business Hub
9 Bank Street
Stornoway
Isle of Lewis, HS1 2XG

